

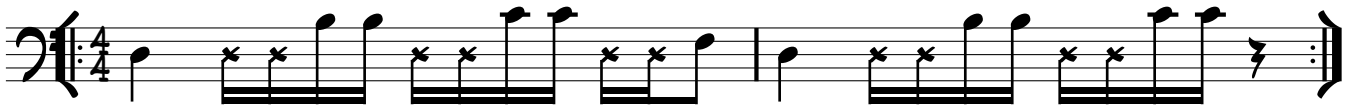
# THE TRACK FORMERLY KNOWN AS REDTENBACHER'S FUNKESTRA - 'FALLING FROM INSANITY' (2004)

SWUNK W/ DROP D ♩ = 105

BASS: S. REDTENBACHER

DRUMS ENTER AFTER 4 BARS

3x's

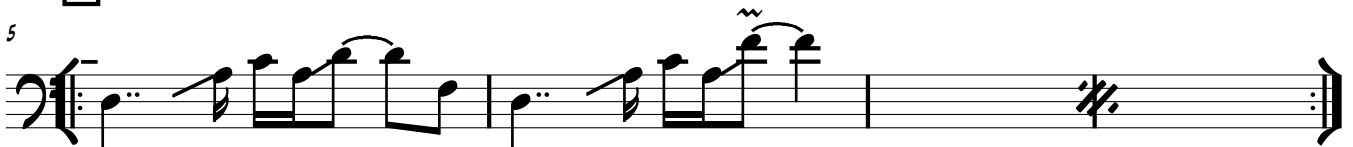


w/WAH



MF

**A**



w/REVERSE FILTER

**B**



w/WAH



17





TTFKA (BASS), PAGE 2

2 SOLO GUITAR

8va -----

21

W/DIS

8va -----

27

31

35



3x's

39

W/REVERSE FILTER

42

PICK UP-----

W/MICRO SYNTH



TENOR SOLO

45

49

Musical notation for measure 49, bass clef, 4/4 time. It features a half note G2, a quarter note A2, and a quarter note B2. A glissando line is drawn over the notes from A2 to B2, labeled "GLISS".

OPEN

53

Musical notation for measure 53, bass clef, 4/4 time. It features a series of eighth notes with a wailing pedal effect, labeled "W/WAH". There are two measures of rests indicated by a double slash. The measure ends with a triplet of eighth notes, labeled "3". A dashed line labeled "FILL" extends from the end of the measure.

57

LAST TIME (ON CUE)



Musical notation for measure 57, bass clef, 4/4 time. It features a series of eighth notes with a wailing pedal effect, labeled "W/WAH".

D.S. AL CODA

Musical notation for measure 57, bass clef, 4/4 time. It features a series of eighth notes with a wailing pedal effect, labeled "W/WAH".

W/WAH

60

Musical notation for measure 60, bass clef, 4/4 time. It features a series of eighth notes with a wailing pedal effect, labeled "W/WAH". The measure ends with a glissando line, labeled "GLISS".

**F** RHODES SOLO

62

Musical notation for measure 62, bass clef, 4/4 time. It features a series of eighth notes with a wailing pedal effect, labeled "W/WAH".

64

Musical notation for measure 64, bass clef, 4/4 time. It features a series of eighth notes with a wailing pedal effect, labeled "W/WAH". The measure ends with a glissando line, labeled "GLISS".

OPEN

ON CUE

66

Musical notation for measure 66, bass clef, 4/4 time. It features a series of eighth notes with a wailing pedal effect, labeled "W/WAH". The measure ends with a glissando line, labeled "GLISS".